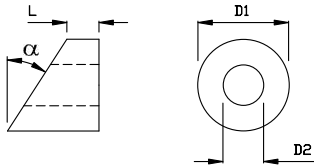


## ANGLE HINGE

Stainless Steel - AISI 316

ART. NO.	$\alpha$	L	D1	D2	KG/100	PACK
A302003	20	5,0	11,0	5,0	0,4	10
A302503	25	5,0	11,0	5,0	0,4	10
A303003	30	5,0	11,0	5,0	0,5	10
A303503	35	5,0	11,0	5,0	0,6	10
A304003	40	5,0	11,0	5,0	0,6	10
A302004	20	5,0	13,0	6,0	0,6	10
A302504	25	5,0	13,0	6,0	0,7	10
A303004	30	5,0	13,0	6,0	0,8	10
A303504	35	5,0	13,0	6,0	0,8	10
A304004	40	5,0	13,0	6,0	0,9	10
A302006	20	5,0	17,0	8,2	1,2	10
A302506	25	5,0	17,0	8,2	1,2	10
A303006	30	5,0	17,0	8,2	1,3	10
A303506	35	5,0	17,0	8,2	1,5	10
A304006	40	5,0	17,0	8,2	1,6	10

Only on request



The angle hinges are used for standard threaded, or cone terminals and give a nice final attachment to diagonal wire installations or on, for example, staircases.



## ANGLE HINGE FOR CONE TERMINALS

Stainless Steel - AISI 316

ART. NO.	$\alpha$	L	D1	D2	D3	L1	KG/100	PACK
A312003	20	5,0	11	6	8,3	1,0	0,4	10
A312503	25	5,0	11	6	8,3	1,0	0,4	10
A313003	30	5,0	11	6	8,3	1,0	0,5	10
A313503	35	5,0	11	6	8,3	1,0	0,6	10
A314003	40	5,0	11	6	8,3	1,0	0,6	10
A312004	20	5,0	13	7	10,3	1,0	0,6	10
A312504	25	5,0	13	7	10,3	1,0	0,7	10
A313004	30	5,0	13	7	10	1,0	0,8	10
A313504	35	5,0	13	7	10	1,0	0,8	10
A314004	40	5,0	13	7	10	1,0	0,9	10
A312005	20	5,0	14	8	12	1,0	0,8	10
A312505	25	5,0	14	8	12	1,0	0,9	10
A313005	30	5,0	14	8	12	1,0	0,9	10
A313505	35	5,0	14	8	12	1,0	1,0	10
A314005	40	5,0	14	8	12	1,0	1,1	10
A312006	20	5,0	17	10	15	1,0	1,2	10
A312506	25	5,0	17	10	15	1,0	1,2	10
A313006	30	5,0	17	10	15	1,0	1,3	10
A313506	35	5,0	17	10	15	1,0	1,5	10
A314006	40	5,0	17	10	15	1,0	1,6	10

Only on request

