

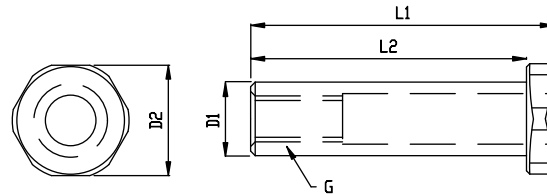


STOP END NUT

Stainless Steel - **AISI 316**

The stop end nut allows for a small amount of adjustment and is a nice end piece to the terminal fitted wire.

ART.NO.	G	D1	D2	L1	L2	B.L./KG	KG/100
A160503	M5	8	12	33	30	800	0,80
A160604	M6	8	12	39	35	1300	0,85
A160806	M8	10	14	45	40	2350	1,20
A161008	M10	13	17	50	45	3500	2,50



INSIDE THREAD TERMINALS

Polished Stainless Steel - **AISI 316**

NO.	RIGHT	NO. LEFT	G	WIRE	A	D1	D2	L1	L2	L3	L4	B.L./KG	KG/	PACK
982504	ON REQUEST		M4	2,5	2,8	5,50	5,50	59	27	15	25	500	0,8	BULK
980305	ON REQUEST		M5	3	3,5	6,35	7,13	77	38	20	30	800	1,3	BULK
980305L	ON REQUEST		M5	3	3,5	6,35	7,13	92	38	35	45	800	1,6	BULK
980406	ON REQUEST		M6	4	4,4	7,50	8,00	84	45	20	30	1250	1,8	BULK
980406L	ON REQUEST		M6	4	4,4	7,50	8,00	99	45	35	45	1250	2,1	BULK
980506	ON REQUEST		M6	5	5,3	9,00	9,00	90	51	20	30	1250	2,8	BULK
980506L	ON REQUEST		M6	5	5,3	9,00	9,00	105	51	35	45	1250	3,2	BULK
980508	ON REQUEST		M8	5	5,3	9,00	12,58	112	51	40	53	2350	5,4	BULK
980608	ON REQUEST		M8	6	6,5	12,58	12,58	110	64	25	35	2350	7,2	BULK
980608L	ON REQUEST		M8	6	6,5	12,58	12,58	126	64	40	50	2350	8,2	BULK
980610	ON REQUEST		M10	6	6,5	12,58	16,00	127	64	40	53	3500	10,5	BULK
980810	ON REQUEST		M10	8	8,4	16,00	16,00	140	83	40	50	3500	15,4	BULK
980812	ON REQUEST		M12	8	8,4	16,00	18,00	147	83	40	53	5100	16,7	BULK
981012	ON REQUEST		M12	10	10,5	17,80	17,80	150	89	40	50	5100	19,4	BULK
981016	ON REQUEST		M16	10	10,5	17,80	22,00	152	89	40	53	8000	20,7	BULK

Often found to be a good alternative to a standard rigging screw are the inside thread terminals. The terminals are available with right handed threads and left handed on request! For ease of use when pressing or swageing onto the wire, the terminals are marked with wire size and swage depth.

